

The Silent Achievers:

Public Health and Disaster Management in a Climate-Changing World

Elena Schak

Research / Film Producer

Centre for Environment and Population Health

Griffith University

SESSION VI - Disaster Management of Extreme Events: Experience from the health care sectors from the Asia-Pacific Region.

“Disaster and Emergency Management in the Health Care Sector”

23 February 2016

- Public health, emergency management and climate change
- Increasing number and intensity of disasters
- Providing a positive example

Queensland Summer of Disasters 2010-2011



Queensland Summer of Disasters



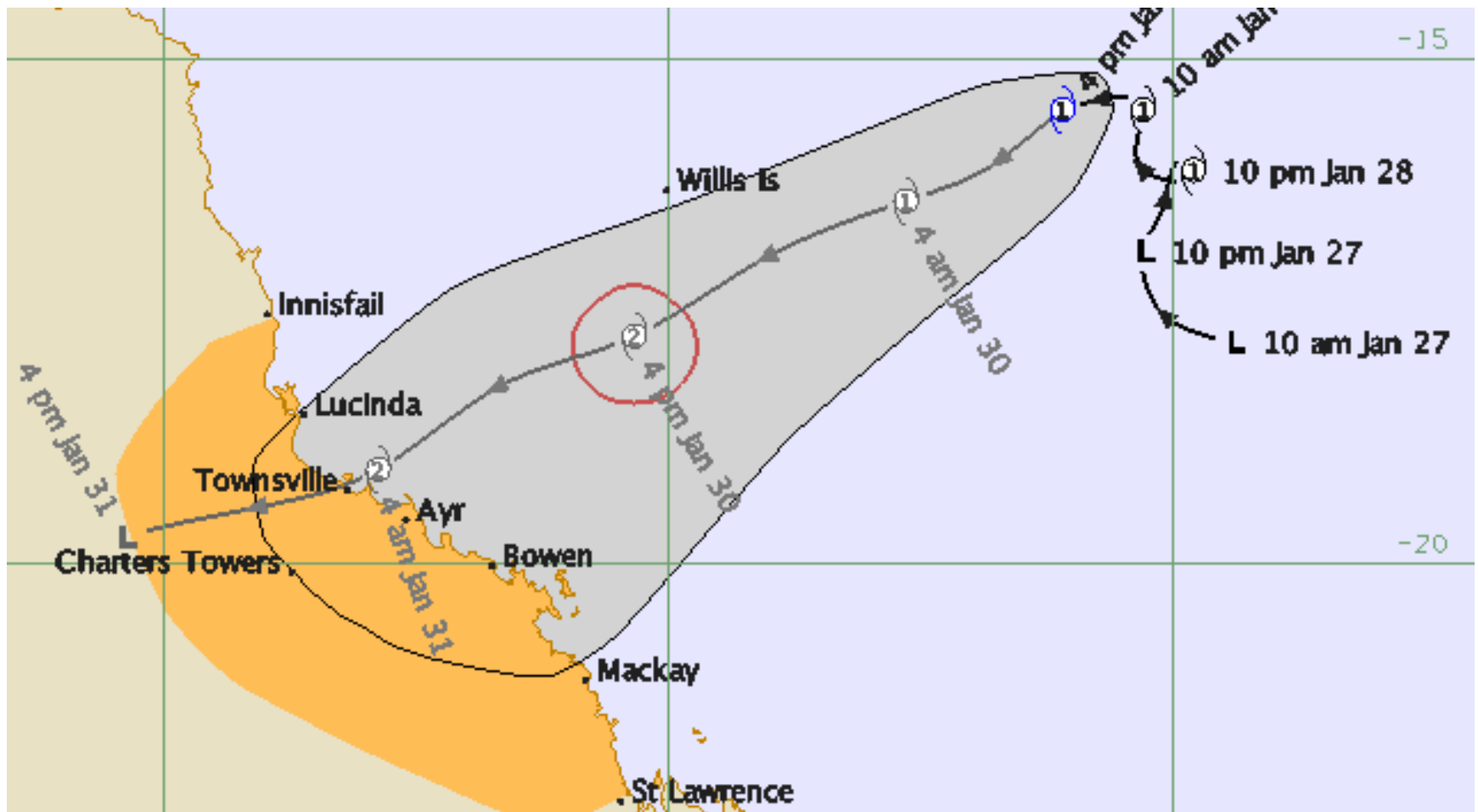
Queensland Summer of Disasters



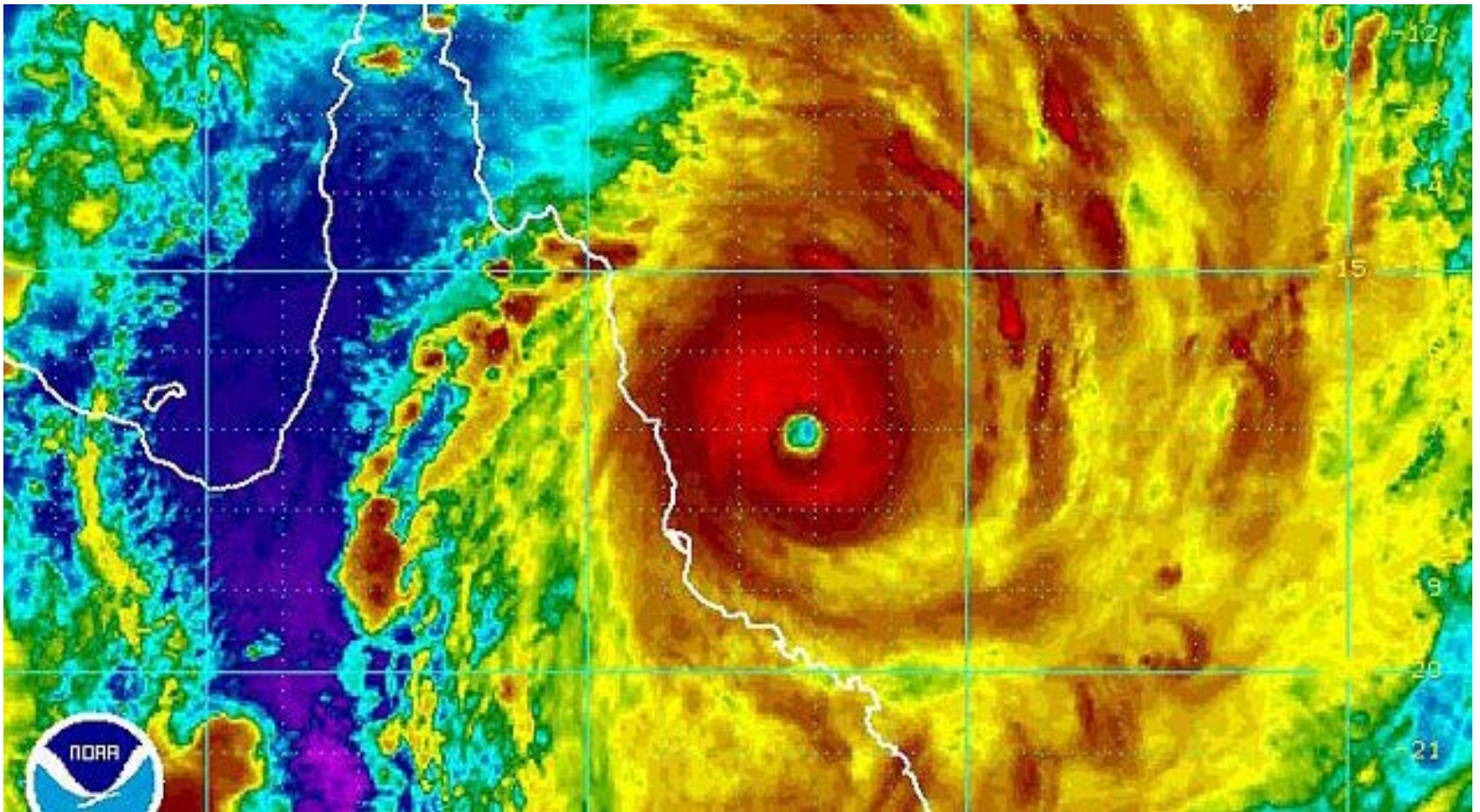
Queensland Summer of Disasters



Queensland Summer of Disasters



Queensland Summer of Disasters

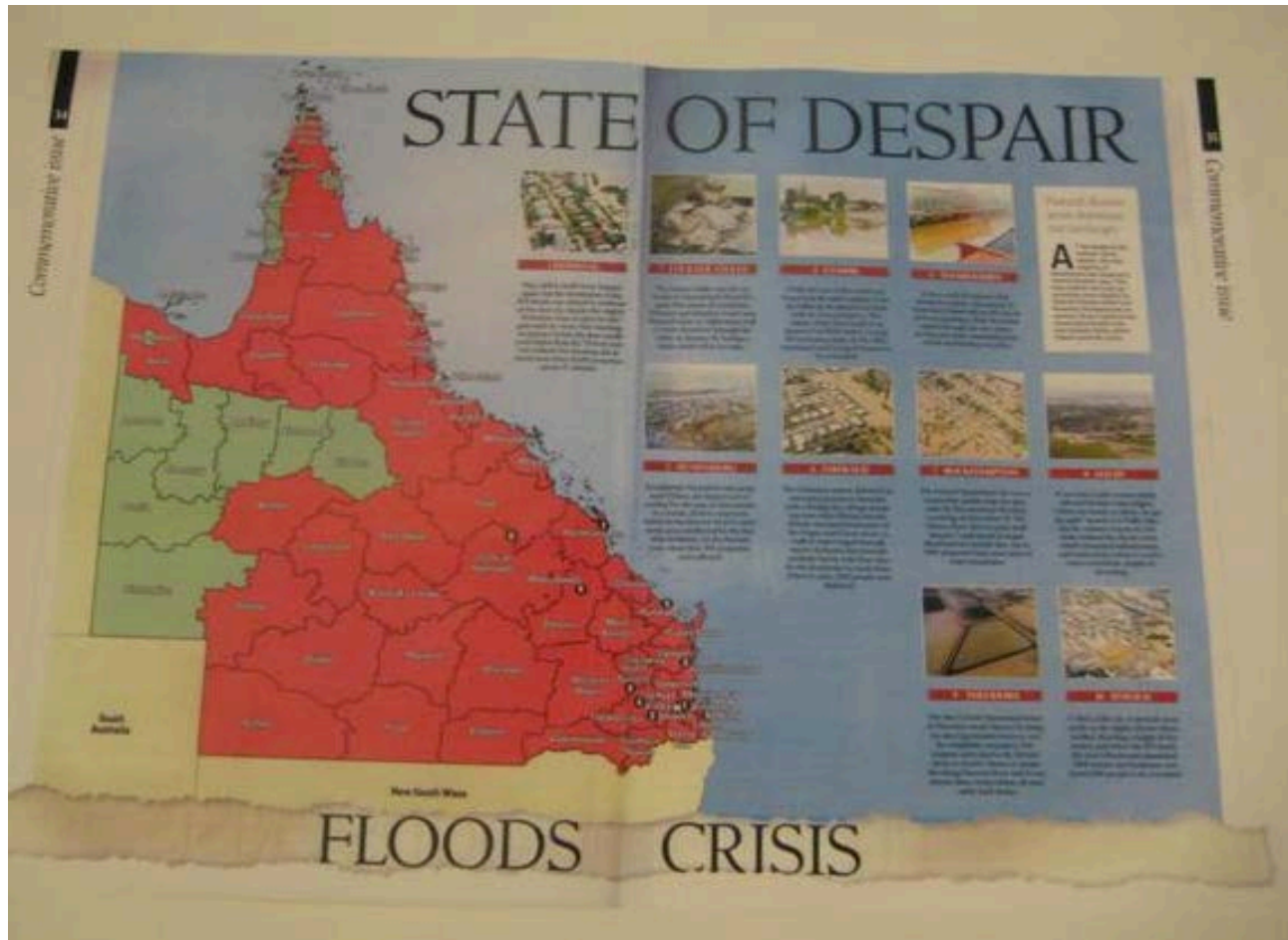


Queensland Summer of Disasters



Queensland Summer of Disasters

- Over 80% of Queensland affected



Queensland Summer of Disasters

- About \$6bn for businesses, although \$40bn GDP reduction
- 38 lives
- 30 000 homes and businesses
- 200 000 people affected

Queensland Summer of Disasters

- But:
 - Proportionately low numbers of deaths
 - No major outbreak of disease
 - Reduction in some infections
 - Relatively fast return to 'normality'

The Documentary

- Cordia Chu reported to WHO colleagues:
 - Preparation
 - Leadership
 - Risk Communication
 - Multi-sectoral Collaboration
 - Community Participation

The Documentary

- Began in 2011
- Interviews: Brisbane, Ipswich, FNQ, especially Tully Heads

Challenges

- Cost
- Footage
- Retrospective
- Audience

The Documentary

- Tells the story
- Public health is often invisible
- Positive actions

Watch this space



International Network for Health Promoting Hospitals & Health Services

The Task Force on Health Promoting Hospitals and Environment

Asia-Pacific Regional Symposium 2016

Eco-Friendly Hospitals For a Sustainable World

22-23 February 2016 | Griffith University | Brisbane | Queensland | Australia



Program BOOKLET



AN INTERNATIONAL FORUM ON

“DISASTER and EMERGENCY MANAGEMENT in the HEALTH CARE SECTOR”

TUESDAY, Feb 23rd 2016
Griffith University, Southbank Campus

Hosted by Centre for Environment and Population Health, Griffith University
and co-hosted by Tzu Chi Medical Foundation, Tzu Chi University

Venue: Griffith University South Bank Campus, Griffith Graduate Centre Building (S07) Room 1.23

Elena Schak

Research / Film Producer

Centre for Environment and Population Health (CEPH)
Griffith University

elena.schak@gmail.com

